

# FAST FIBRE

## Pre-Terminated Solutions Guide



# Pre-Terminated Solutions Range

## FAST FIBRE

### Fast Facts for

#### Fast Fibre Pre-Terminated Solutions

- Fast and efficient installation
- Lowest installed cost
- Low weight and compact packaging
- Supplied with installation guide and test certificate
- Ideally suited to indoor data centre, LAN or campus networks
- Typically manufactured using tight buffered fibre cable (other cable types available).



## FAST FIBRE PLUS

### Fast Facts for

#### Fast Fibre Plus Pre-Terminated Solutions

- Premium Installation Packaging - superior installation protection and pulling features
- Installation guide
- Individual connector results
- Optional Fluke Networks and end face test reports available upon request
- Ideally suited to duct installation
- Wide range of connector and cable types available to suit your application.



## FAST FIBRE ENHANCED

### Fast Facts for

#### Fast Fibre Enhanced Pre-Terminated Solutions

- Premium Installation Packaging - superior installation protection and pulling features
- Installation guide
- Individual connector results
- Optional Fluke Networks and endface test reports available upon request
- Ideally suited to duct installation
- Wide range of connector and cable types available to suit your application
- Interferometer report also available.



## FAST FIBRE Redeployable



# Contents

Why Use Pre-Terminated Solutions	4-5
Fast Fibre Pre-Terminated Solutions	6-9
Fast Fibre <b>Plus</b> Pre-Terminated Solutions	10-13
Fast Fibre <b>Enhanced</b> Pre-Terminated Solutions	14-17
Options for your Pre-Terminated Assemblies	18-19
Re-Deployable Pre-Terminated Solutions	20-21
Bespoke Pre-Terminated Solutions	22-23
Consumables	24-27

The Fast Fibre brand harnesses from the outset our belief in a product offering that delivers, quality, functionality and commercially at its core.

## **FAST - QUALITY**

High performance components for today's high speed world

## **FAST - FUNCTIONALITY**

Engineered features to improve installation times

## **FAST - COMMERCIALITY**

Comprehensive manufactured stock and logistics options, ensure competitive products are delivered to meet your schedules

### **WHAT DOES FASTFIBRE MEAN TO YOU?**

- Customer Focus
- Functionality
- Quality
- Innovation
- Sustainability



# SAVE!

Make significant savings over splicing or terminating fibres on site

- ✓ Reduce time
- ✓ Reduce material costs and waste
- ✓ Reduce network and data centre downtime
- ✓ Reduce specialised site based equipment and training

**Reduce time.** Installation of a pre-terminated solution is typically faster than deploying a cable, stripping, preparing and splicing on pigtails or directly terminating connectors while on site. As a result, the number of site days and costs of travel, set up and clear down are minimised. With a factory terminated pre-configured solution ready to install, there is no time wasted on gaining repeated access to the site. No specialised splicing or testing equipment is required on site. Testing is quicker using a pre-terminated solution as only a simple light source and power meter test is required. As the fibre has been terminated in a controlled factory environment and already tested and inspected prior to dispatch, the connector need only be cleaned according to standard installation guidelines.

**Reduce material costs.** Scrap is eliminated as the pre-terminated solution is manufactured to the required length and terminated with connectors rather than buying cable, cutting to length on site and separately buying pigtails and splicing consumables. Facilities optimised to manufacture and test multi-fibre pre-terminated solutions and economies of scale reduce costs per fibre link. Waste disposal costs are minimised as packaging is reduced.

**Reduce network downtime.** Faster installation and testing ensures disruption to existing links is minimised and implementation of the new link faster. This meets the objectives network and data centre managers to reduce risky and expensive site based engineering as multiple fibre high density links can be installed in a matter of minutes.

**Reduce specialised site based equipment and training.** With a pre-terminated solution, labour can be focused where it is needed without the need for specialised splicing and testing equipment deployed to every install every time. By using pre-terminated solutions, your fusion splicer, OTDR and cable testing and inspection and analysis equipment tied is not tied up for long periods of time and reducing your capital outlay per unit of labour.

# IMPROVE!

Achieve better project returns

- ✓ **Install with confidence**
- ✓ **Achieve better performance**
- ✓ **More choice**
- ✓ **Deliver larger projects**

**Install with confidence.** Each pre-terminated multi-fibre cable is custom built to your specific design and performance requirements, application and installation environment. You specify your cable and connectivity requirements and our optical engineers develop and manufacture your end-to-end pre-terminated cable solution. You arrive on site confident that the correct solution can be deployed quickly and efficiently.

**More choice.** Configure the solution to best suit the application by selecting from the comprehensive range of cable constructions, optical connectivity options, pulling, reeling and deployment solutions available from Matrix to ensure that the pre-terminated solution meets the application and installation environment.

This includes:

- Pre-terminated solutions for use direct equipment links without the needing for a patching field.
- Panel to panel links where patching is required.
- Armoured, deployable or specialised multi-fibre pre-terminated solution suitable for building to building, harsh environment, broadcast or field re-deployable applications.

**Achieve better performance.** Using high quality ferrules connectors, adhesives, polishing processes and cleaning consumables, pre-terminated solutions can meet demanding optical loss budgets and deliver:

- High-quality, consistent machine polishing processes to ensure that requirements for insertion loss, return loss and end-face geometry are met or exceeded.
- Adherence to international standards for performance, testing and inspection in a controlled environment with compliant equipment.
- Quality assurance with interferometer checked end-face geometry. Improved results through 100% inspection for lower insertion loss, defects and cleanliness.

**Deliver larger projects.** By reducing the time it takes to install, more links can be installed per unit of labour enabling you to eliminating the need for sub-contracted labour on larger projects and scalable deployments in larger networks and data centres.

# Fast Fibre Pre-Terminated Solutions

Optimised for direct installation into indoor trays or trunking in data centres

## Features

- Lightweight for easier installation and reduced transportation cost
- Minimal packaging i.e no pulling sock/eye to cut and remove
- Available with 900µm or 2mm ruggedised staggered or fan-out tails
- Made to measure to your requirements
- Typically supplied on tight buffered fibre cable.

## Benefits

- Cost effective improved project ROI
- Fast installation
- Minimal packaging to remove and dispose
- Manufactured to industry standards
- Cleaned and pre-tested before deployment
- No specialist tools, training or consumables required on site.

## Ideal Applications

- Indoor
- Data centre, LAN or campus networks
- Fast Installation into cable plastic or metal containment
- Secure installation into patch panels or wall boxes with supplied cable that retains cable
- Easy Installation into optical distribution frames.



Optimised for laying  
in tray or trunking

Less product packaging to remove  
prior to installation

Fast installation  
(factory installed pulling eyes available)

## Fast Facts for

### Fast Fibre Pre-terminated Solutions

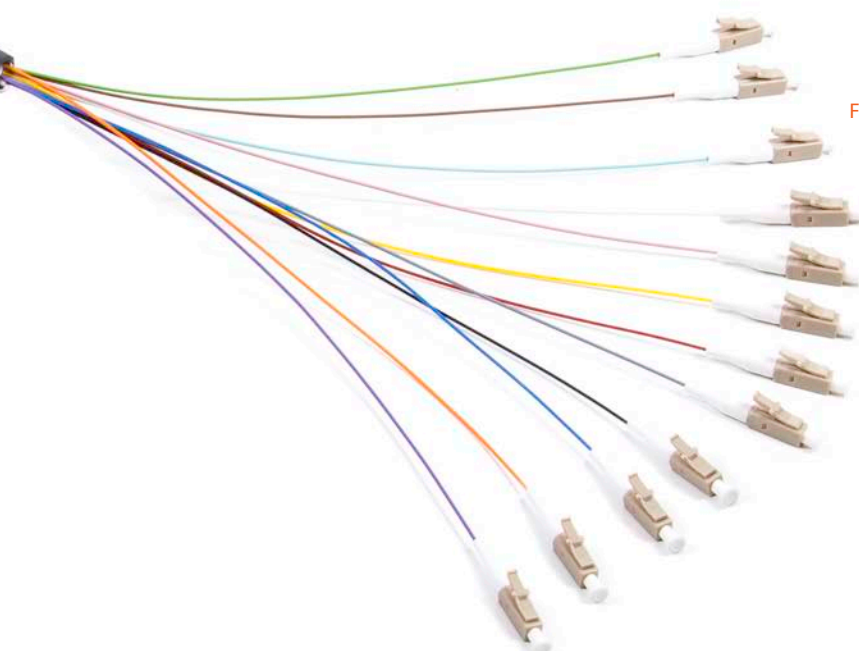
- Fast and efficient installation
- Lowest installed cost
- Low weight and compact packaging
- Supplied with installation guide and test certificate
- Ideally suited to indoor data centre, LAN or campus networks
- Typically manufactured using tight buffered fibre cable (other cable types available).

## ? Did you Know

You can choose fibre tails with staggered or fan out configurations



LC, SC, FC, ST connectors options are available for you to choose from to create the Pre-Terminated solution you require. All Pre-Terminated solutions are manufactured to exacting international standards and quality processes.



Factory tested and cleaned

Available with 900µm or 2mm ruggedised staggered or fan out tails

Engineered to be light weight reducing transportation cost and waste

## Smart Fact

Save time and money by using a Fast Fibre Pre-Terminated Solution

Conventional solution incorporates these elements that may not be required.

Fast Fibre Solutions  
Economy without compromise



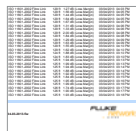
Heat Shrink



Pulling Eye



Tubing



Test Results



Empty Reel



Packaged Pre-term

# Fast Fibre Specifications

## Technical Specification

Fibre Type Options OM1, OM2, OM3 OM4 and OS2 (G652D)

Cable Specification Options Tight Buffered, Loose Tube or Breakout cables are optional

Connectors Options LC, SC, ST, FC (UPC)

### Individual test results:

Standard average insertion loss :  $\leq 0.375\text{dB}$

Standard average return loss: SM  $\geq -45\text{dB}$

## Packaging Specifications

### Fast Fibre Pre-Terminated < 50 Metres

Fast Fibre Pre-Terminated assemblies that are less than 50 Metres in length and up to 24 fibres



Supplied in a protective bag

Staggered tails carefully packed in a protective tube

Fan-out tail carefully packed in protective bubble packaging

Velcro tie wraps to ensure that each Pre-Terminated assembly is secured but easily deployed

Test certificate and installation guide supplied.

### Fast Fibre Pre-Terminated > 50 Metres

Fast Fibre Pre-Terminated assemblies that are more than 50 Metres in length and up to 24 fibres



Supplied coiled on a reel

Kevlar pulling loop

Staggered tails carefully packed in a protective tube.

## Example installation guide and test certificate



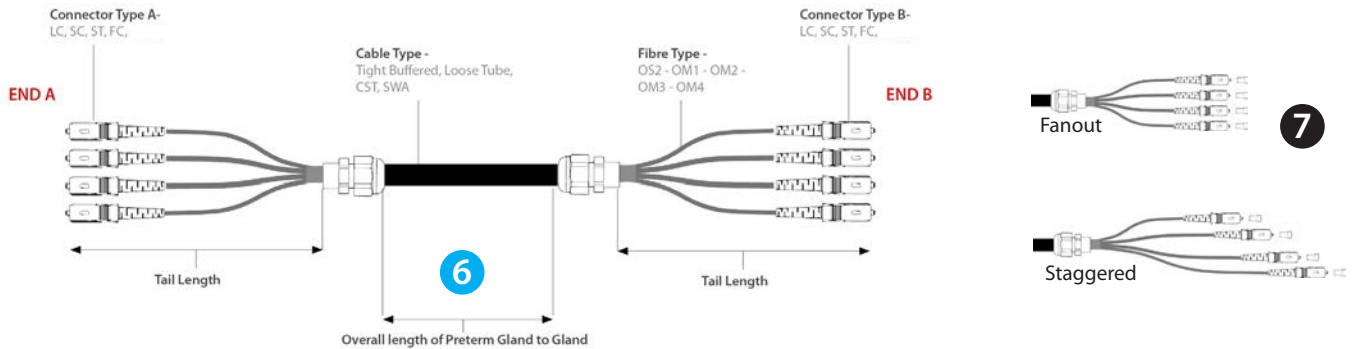


# Fast Fibre Part Number Configurator

## Did you Know?

There are two ways to specify the length of a Fast Fibre Pre-Terminated assembly, please note that the gland to gland measurement is used by default, unless otherwise specified on your order.

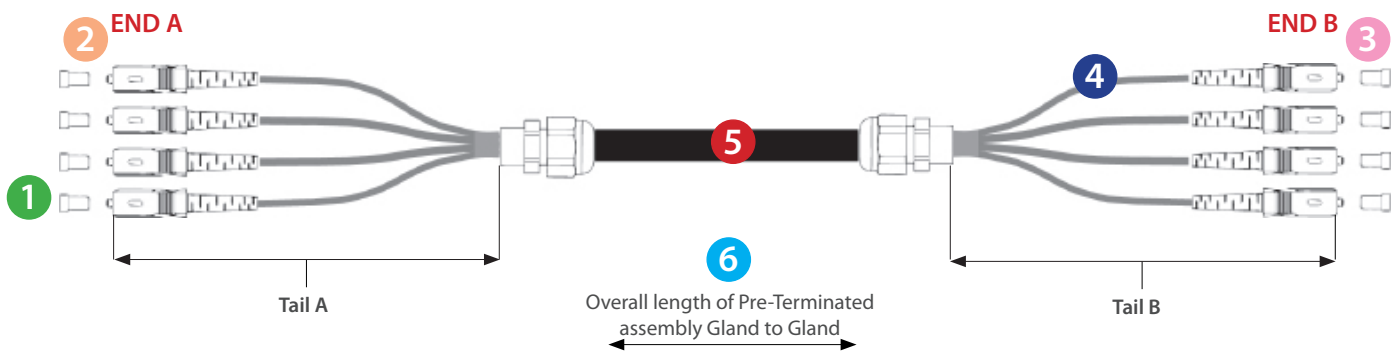
## Gland to Gland



## Optional Extra's

- Protective sock instead of tube for all ruggedised tail Fast Fibre Pre-Terminated solutions
- Non standard cable construction, fibre types and connectors available
- Supplied on LSZH jacket cable as standard. Alternative jacket types can be specified
- Labelling available upon request, to ease installation and save time.

## Fast Fibre Part Number Configurator



1	2	3	4	5	6	7
Fibre Count	End A Option	End B Option	Fibre Type	Cable Construction	Length in Metres	Tails
2	LC	NONE	OS2	TB - Tight Buffered	ENTER YOUR LENGTH IN METRES	T9F - 900µm - Fan-out
4	SC	LC	OM1	LT - Loose Tube		T9S - 900µm - Staggered
6	ST	SC	OM2	CST - Corrugated Steel Tape		T2F - 2mm Fanout
8	FC	ST	OM3	SWA - Steel Wire Armour		T2S - 2mm - Staggered
12		FC	OM4	BO - Breakout Cable		
16						
24						

### Example Part Number:

24	LC	LC	OM3	TB	100	T9S
Resulting P/N	24LCLCOM3TB100T9S					

NB Unless specified the length of the tail ends will be cut to the industry standard, 48 Fibre Pre-Terminated assemblies available upon request

# Fast Fibre **Plus** Pre-Terminated Solutions

Suitable for pulling into indoor or outdoor ducts

## Features

- Made with premium terminations for enhanced optical performance packaging when laying or pulling through ducts, trunking or trays
- Available with 900µm or 2mm ruggedised staggered or fan-out tails
- Supplied with individual test result and optional Fluke Networks test and visual inspection for total confidence of compliance with standards of end face cleanliness and defects.

## Benefits

- High strength pulling features
- Cost effective option
- Manufactured to industry standards
- Cleaned and pre-tested before deployment
- Fast installation
- No special tools, training or consumables required onsite.

## Ideal Applications

- For internal and external use, in data centre LAN or campus networks
- Can be used in cable trays / conduits
- Suitable for use between data centre cabinets, zone halls or floors.

Protective packaging ideal for environments where the Pre-Terminated assembly is to be pulled through.

High performance connectors offering enhanced optical performance

Ideal for indoor and outdoor applications where pulling is required



## Fast Facts for

### Fast Fibre **Plus** Pre-Terminated Solutions

- Premium Installation Packaging - superior installation protection and pulling features
- Installation guide
- Individual connector results
- Optional Fluke Networks and end face test reports available upon request
- Ideally suited to duct installation
- Wide range of connector and cable types available to suit your application.

## ? Did you Know

You can choose from a variety of fibre and connector types so you can choose to have the Pre-Terminated solution you need.

LC, SC, FC, ST, E2000 (UPC or APC) connectors options are available for you to choose from to create the Pre-Terminated solution you require. All Pre-Terminated solutions are manufactured to exacting international standards and quality processes.



Factory tested and cleaned

Available in 900µm or 2mm staggered or ruggedised tails

Blister pack , protective packaging for fan-out tails

## Smart Fact

Save time and money by using a Fast Fibre **Plus** Pre-Terminated Solution

Our in-house experts have listened to the requirements of today's network installer's, and the Fast Fibre Plus Pre-Terminated range combines premium installation packaging and pulling protection with higher optical performance quality build and Fluke Network visual and test certification:

Fast Fibre Plus Solutions  
Functionality without compromise



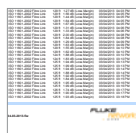
Heat Shrink



Pulling Eye



Tubing



Test Results



Empty Reel



Packaged Pre-term

# Fast Fibre Plus Specification

## Technical Specification

Fibre Type Options OM1, OM2, OM3, OM4 and OS2 (G652D) (G657A optional)  
 Cable Specification Options Tight Buffered, Loose Tube, SWA, CST or Breakout  
 Connectors Options LC, SC, ST, FC, E2000 (UPC or APC)

### Individual test results:

- Standard insertion loss:  $\leq 0.25\text{dB}$  (Max)
- Standard insertion loss:  $\leq 0.20\text{dB}$  (Typ)
- Standard average return loss (SM):  $\geq -50\text{dB}$  (UPC)
- Standard average return loss (SM):  $\geq -65\text{dB}$  (APC)

## Packaging Solutions

### Fast Fibre Plus Pre-Terminated < 50 Metres

Fast Fibre Plus Pre-Terminated assemblies that are less than 50 Metres in length and up to 24 fibres



- Supplied in a protective bag
- Kevlar pulling loop
- Tail ends carefully packed in protective tubing or premium blister pack
- Velcro wraps to ensure that each preterm is secure to ease deployment.

### Fast Fibre Plus Pre-Terminated > 50 Metres

Fast Fibre Plus Pre-Terminated assemblies that are more than 50 Metres in length and up to 24 fibres



- Supplied coiled on a reel
- Tail ends carefully packed in protective tubing or premium blister pack
- Heavy duty pulling ring on one or both ends
- Test Certificate and installation guide, optional fluke and visual inspection test certification available.

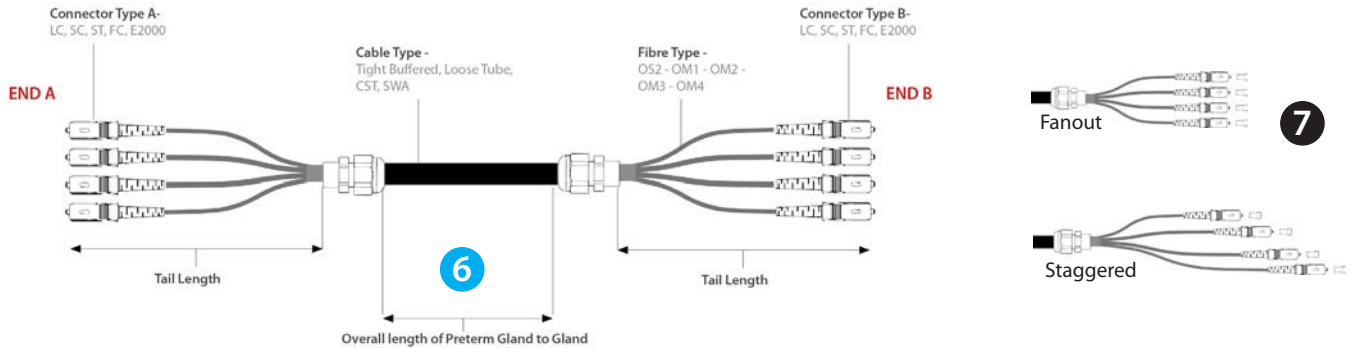


# Fast Fibre Plus Part Number Configurator

## Did you Know?

There are two ways to specify the length of a Fast Fibre Plus Pre-Terminated assembly, please note that the gland to gland measurement is used by default, unless otherwise specified on your order.

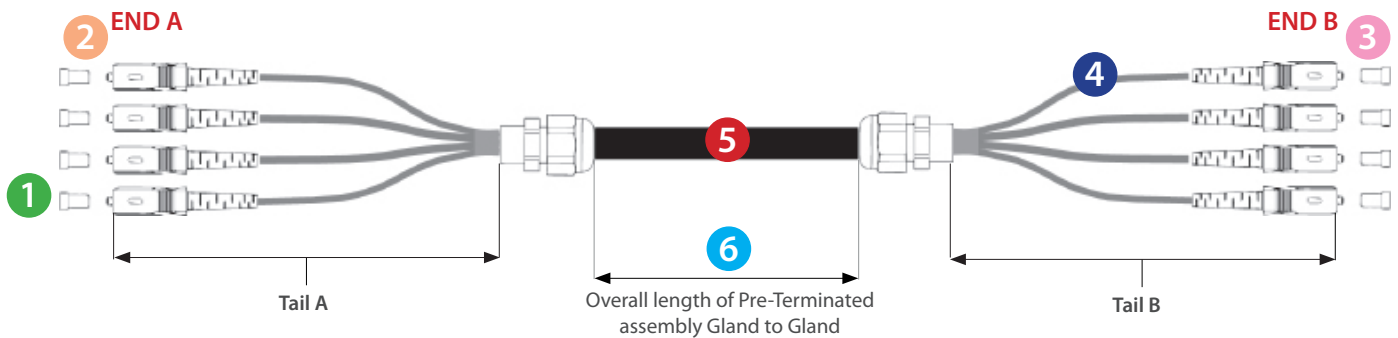
## Gland to Gland



## Optional Extra's

- Protective sock instead of tube for all ruggedised tail Fast Fibre Plus Pre-Terminated solutions
- Non standard cable construction, fibre types and connectors available
- Supplied on LSZH jacket cable as standard. Alternative jacket types can be specified
- Labelling available upon request, to ease installation and save time.

## Fast Fibre Plus Part Number Configurator



1	2	3	4	5	6	7
Fibre Count	End A Option	End B Option	Fibre Type	Cable Construction	Length in Metres	Tails
2	LC	NONE	OS2	TB - Tight Buffered	ENTER YOUR LENGTH IN METRES	T9F - 900µm - Fan-out
4	SC	LC	OM1	LT - Loose Tube		T9S - 900µm - Staggered
6	ST	SC	OM2	CST - Corrugated Steel Tape		T2F - 2mm Fanout
8	FC	ST	OM3	SWA - Steel Wire Armour		T2S - 2mm - Staggered
12		FC	OM4	BO - Breakout Cable		
16	E2000	E2000				
24	LCA	LCA				
	SCA	SCA				
	FCA	FCA				
	E2A	E2A				

### Example Part Number:

24	LC	LC	OM3	TB	100	T9S
Resulting P/N	24LCLCOM3TB100T9S					

NB Unless specified the length of the tail ends will be cut to the industry standard, 48 Fibre Pre-Terminated assemblies available upon request

# Fast Fibre **Enhanced** Pre-Terminated Solutions

Suitable for the most demanding data centre, LAN and campus applications

## Features

- Made with high performance connectors to achieve premium optical performance
- Supplied with individual test result and optional Fluke, visual inspection and interferometer results for complete peace of mind for end face cleanliness, defect and end face geometry compliance
- Available as 900µm or 2mm tails
- Made to measure to your requirements.

## Benefits

- High strength pulling features
- Cost effective option
- Manufactured to industry standards
- Cleaned and pre-tested before deployment
- Fast installation
- No special tools, training or consumables required onsite.

## Ideal Applications

- For internal and external use, in data centre LAN or campus networks
- Can be used in cable trays / conduits
- Suitable for use between data centre cabinets, zones halls or floors.

Protective packaging ideal for environments where the Pre-Terminated assembly is to be pulled through.

High performance connectors offering enhanced optical performance

Ideal for indoor and outdoor applications where pulling is required

## Fast Facts for

### Fast Fibre **Enhanced** Pre-Terminated Solutions

- Premium Installation Packaging - superior installation protection and pulling features
- Installation guide
- Individual connector results
- Optional Fluke Networks and endface test reports available upon request
- Ideally suited to duct installation
- Wide range of connector and cable types available to suit your application.
- Interferometer report also available.



## ? Did you Know

You can choose from variety fibre and connector types so you can choose to have the Pre-Terminated solution you need.

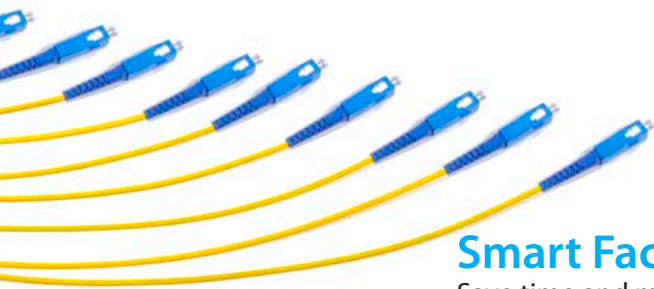
LC, SC, FC, ST, E2000 (UPC or APC) connectors options are available for you to choose from to create the Pre-Terminated solution you require. All Pre-Terminated solutions are manufactured to exacting international standards and quality processes.



Factory tested and cleaned

Available in 900um or 2mm staggered or ruggedised tails

Protective packaging for fan-out tails



## Smart Fact

Save time and money by using a Fast Fibre **Enhanced** Pre-Terminated Solution

Our in-house experts have listened to the requirements of today's network installer's, and the Fast Fibre Enhanced Pre-Terminated range combines premium installation packaging and pulling protection with higher optical performance quality build and Fluke Network visual and test Certification:

Fast Fibre **Enhanced** Solutions  
Performance without compromise



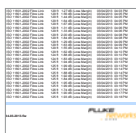
Heat Shrink



Pulling Eye



Tubing



Test Results



Empty Reel



Packaged Pre-term

# Fast Fibre Enhanced Specifications

## Technical Specification

Fibre Type Options OM1, OM2, OM3, OM4 and OS2 (G652D) (G657A optional)  
 Cable Specification Options Tight Buffered, Loose Tube, SWA, CST or Breakout  
 Connectors Options LC, SC, ST, FC, E2000 (UPC or APC)

### Individual test results:

- Standard insertion loss:  $\leq 0.15\text{dB}$  (Max)
- Standard insertion loss:  $\leq 0.07\text{dB}$  (Typ)
- Standard average return loss (SM):  $\geq -55\text{dB}$  (UPC)
- Standard average return loss (SM):  $\geq -65\text{dB}$  (APC)

## Packaging Solutions

### Fast Fibre Enhanced Pre-Terminated < 50 Metres

Fast Fibre Enhanced Pre-Terminated assemblies that are less than 50 Metres in length and up to 24 fibres



- Supplied in a protective bag
- Kevlar pulling loop
- Tail ends carefully packed in protective tubing or premium blister pack
- Velcro wraps to ensure that each preterm is secure to ease deployment.

### Fast Fibre Enhanced Pre-Terminated > 50 Metres

Fast Fibre Enhanced Pre-Terminated assemblies that are more than 50 Metres in length and up to 24 fibres



- Supplied coiled on a reel
- Tail ends carefully packed in protective tubing or premium blister pack
- Heavy duty pulling ring on one or both ends
- Test Certificate and installation guide, optional fluke and visual inspection test certification available.



Parameter	Test Method	Result
Optical Connector Specification	As per relevant IEC Standard	Right
Optical Fibre Specification	IEC 60793	Right
Cable Core Structure	IEC 60794	Right
Insertion Loss	IEC 61300-1-2	Right
Return Loss	IEC 61300-1-1	Right
Backscatter	IEC 60794-1	Right
End Loss Backscatter	IEC 60794-2	Right
Optical Connector End Treatment	IEC 61300-1-4 Backscatter	Right
Backscatter Factor of Connector Endface	IEC 61300-1-5	Right
Fiber Core Connector Backscatter	IEC 61300-1-6 (Fluor)	Right
Fiber Core Connector Return Loss (RL)	IEC 61300-1-6 (Fluor)	Right
Endface Surface Cleanliness	ISO 9000	Right

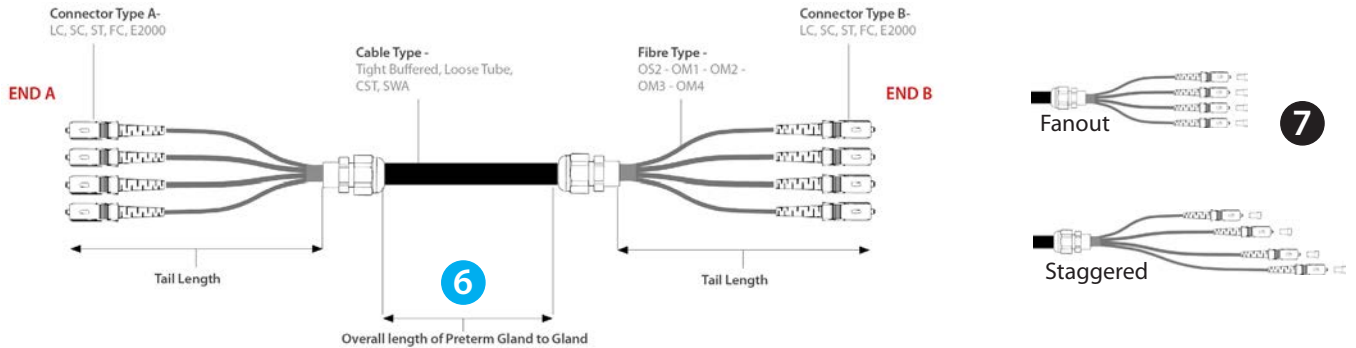


# Fast Fibre Enhanced Part Number Configurator

## Did you Know?

There are two ways to specify the length of a Fast Fibre Enhanced Pre-Terminated assembly, please note that the gland to gland measurement is used by default, unless otherwise specified on your order.

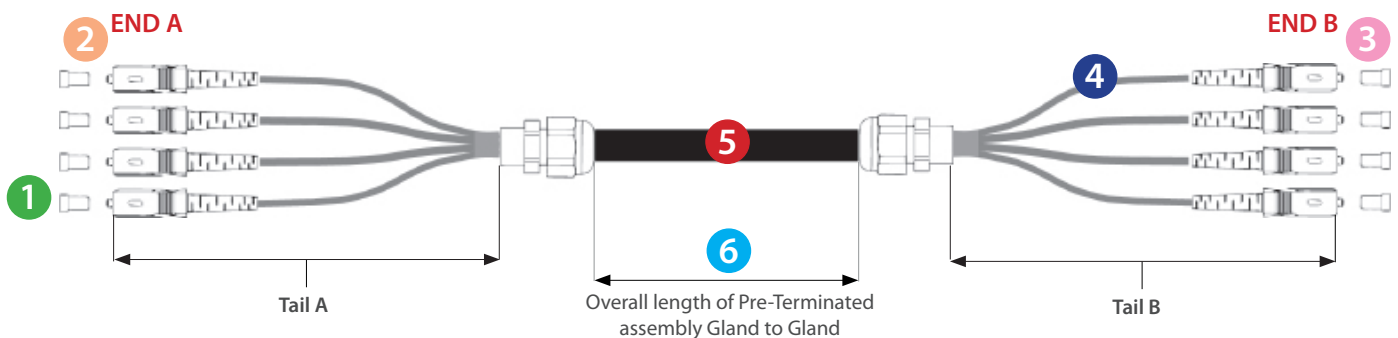
## Gland to Gland



## Optional Extra's

- Protective sock instead of tube for all ruggedised tail Fast Fibre Enhanced Pre-Terminated solutions
- Non standard cable construction, fibre types and connectors available
- Supplied on LSZH jacket cable as standard. Alternative jacket types can be specified
- Labelling available upon request, to ease installation and save time
- Interferometer report available upon request.

## Fast Fibre Enhanced Part Number Configurator



1	2	3	4	5	6	7
Fibre Count	End A Option	End B Option	Fibre Type	Cable Construction	Length in Metres	Tails
2	LC	NONE	OS2	TB - Tight Buffered	ENTER YOUR LENGTH IN METRES	T9F - 900µm - Fan-out
4	SC	LC	OM1	LT - Loose Tube		T9S - 900µm - Staggered
6	ST	SC	OM2	CST - Corrugated Steel Tape		T2F - 2mm Fanout
8	FC	ST	OM3	SWA - Steel Wire Armour		T2S - 2mm - Staggered
12		FC	OM4	BO - Breakout Cable		
16	E2000	E2000				
24	LCA	LCA				
	SCA	SCA				
	FCA	FCA				
	E2A	E2A				

### Example Part Number:

24	LC	LC	OM3	TB	100	T9S
Resulting P/N	24LCLCOM3TB100T9S					

NB Unless specified the length of the tail ends will be cut to the industry standard, 48 Fibre Pre-Terminated assemblies available upon request

# Options for your Pre-Terminated Assemblies

1

Will your assembly be Indoor or Outdoor ?



If you need a Indoor then there are some fibre jacket types to select from:

**Single Loose Tube (LSZH), Tight Buffered (LSZH) or Multifibre Full Breakout Cable (LSZH)**



If you need a Indoor/Outdoor then there are some fibre jacket types to select from:

**Single Loose Tube (LSZH) or Tight Buffered (LSZH)**



If you need a Outdoor then these are some fibre jacket types to select from:

**Single Loose Tube (LSZH), Corrugated Steel Tape (LSZH) or Steel Wire Armour (LSZH)**

PE Jacket available upon request

For Harsh Environments, **Corrugated Steel Tape** or **Steel Wire Armoured** jacket offers high crush and rodent resistance

## SINGLE TUBE TIGHT BUFFERED FIBRE CABLE



OS2 - OM1 - OM2  
OM3 - OM4

### Features and Applications

Low Smoke Zero Halogen Jacket (LSZH)  
Aramid yarn strength members for high tensile strength  
Ideal for internal runs in trunking or ceiling/floor spaces  
Suited to short runs between buildings

## SINGLE LOOSE TUBE FIBRE CABLE

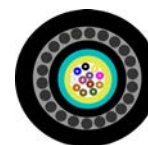


OS2 - OM1 - OM2  
OM3 - OM4

### Features and Applications

Low Smoke Zero Halogen Jacket (LSZH)  
Compact 250µm loose tube  
Ideal for duct and building links  
Suited to environments that would require rodent resistant

## STEEL WIRED ARMOUR FIBRE CABLE



OS2 - OM1 - OM2  
OM3 - OM4

### Features and Applications

High crush resistance  
Low Smoke Zero Halogen Jacket (LSZH)  
Ideal for harsh environments including direct burial  
Suited to environments that would require rodent resistant

48

Up to 48 Fibres



Fire Retardant



Vertical Applications



Horizontal Applications

48

Up to 48 Fibres



Fire Retardant



Water Resistant



Rodent Resistant



Horizontal Applications

48

Up to 48 Fibres



Fire Retardant



Water Resistant



Rodent Resistant



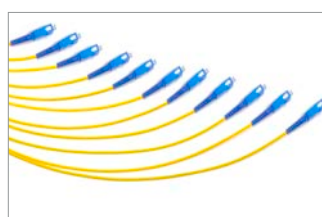
Horizontal Applications

2

Will your assembly be installed into a patch panel / wall box or ODF solution?



For installations into a patch panel / wall box or ODF then the Fast Fibre 900um tails are well suited.



For installations that are connected to front of panel or to active equipment the Fast Fibre, Fast Fibre **Plus** or Fast Fibre **Enhanced** 2mm tail solutions are well suited.

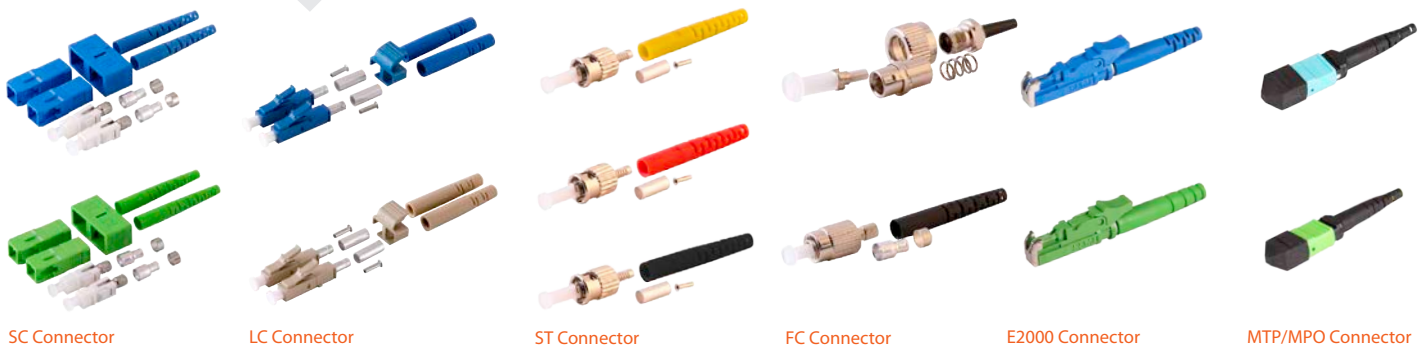
### 3

Choosing the right fibre type for your assembly will impact the distance and bandwidth capabilities of the assembly when installed and in use. The chart below offers some guidelines to assist in the selection process.

	Mode	Fibre Core Cladding Size	Supported Wavelength	Data Rate upto 100 Mbit/s	Data Rate upto 1 Gbits	Data Rate upto 10 Gbits	Data Rate upto 40 Gbits	Data Rate upto 100 Gbits
OM1	Multimode	62.5/125µm	850nm, 1300nm	2000 Mtrs	275 Mtrs	33 Mtrs		
OM2	Multimode	50/125µm	850nm, 1300nm	2000 Mtrs	550 Mtrs	82 Mtrs		
OM3	Multimode	50/125µm	850nm, 1300nm	2000 Mtrs	550 Mtrs	300 Mtrs	100 Mtrs	100 Mtrs
OM4	Multimode	50/125µm	850nm, 1300nm	2000 Mtrs	1000 Mtrs	550 Mtrs	150 Mtrs	150 Mtrs
OS2	Singlemode	9/125µm	1310nm, 1550nm	80,000 Mtrs	80,000 Mtrs	80,000 Mtrs	10,000 Mtrs	10,000 Mtrs

### 4

There are a number of connector types to choose from, below are some of the typical variations if you require a connector type not shown, please contact us for further details.



### 5

There are re-deployable options available for Pre-Terminated assemblies, below is a small section of re-deployable pulling socks and reel options that can be supplied, please contact us for further details.



### 6

What reeling solution will be suitable to deploy your Pre-Terminated assembly. Below is a section of the reeling range, please contact us for further details.



# Re-Deployable Range

Our re-deployable Pre-Terminated assemblies can be supplied on a wide range of reel options which are featured in this section. We have the capability to bespoke a solution to meet your requirements, please contact us for more detail on this.

The re-deployable range includes Fast Fibre and Fast Fibre **Plus**



## Fast Fibre

Our Fast Fibre range of deployable assemblies, are designed for applications that require up-to 8 fibres, with a optional mesh pulling sock for indoor or light outdoor applications.

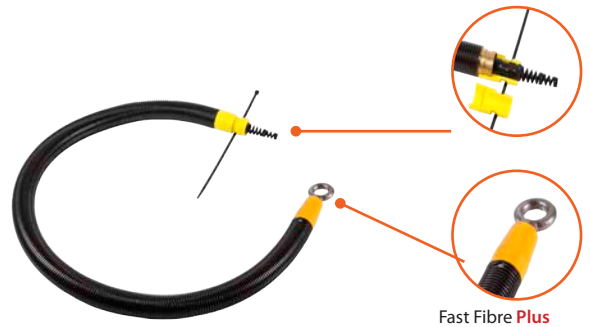
Supporting connector types are SC, LC ST as standard. Other connector options are available upon request. Optional extras include a heavy duty/ rugged pulling sock, optimised strain relief and fibre optic clean kit.



## Fast Fibre **Plus**

Our Fast Fibre **Plus** range of deployable assemblies, are designed for applications that require up to 24 fibres, with a optional heavy duty/ rugged pulling sock or mesh pulling sock for indoor or light outdoor applications.

Our re-deployable range of Pre-Terminated solutions can be supplied on Mil-Tac cable which is extremely strong, lightweight yet rugged. Mil-Tac re-deployable solutions are suitable for broadcast, military tactical field use and as well as industrial, mining and petrochemical environments where retrieval and re-use is a requirement.



A optimised strain relief is supplied with all heavy duty /rugged pulling sock. The heavy duty sock incorporates a protection. A fibre optic clean kit is available to ensure your connection remains clean and dirt free.

Supporting connector types are SC, LC, FC, ST and E2000 (UPC or APC)

## Portable and stackable reel options - available from stock



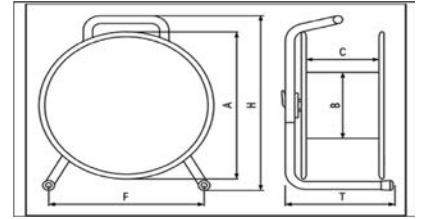
Plastic Drum



Metal Drum

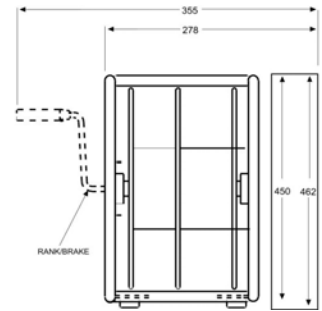
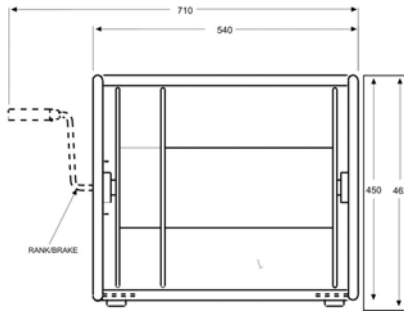


Ultra Light weight, portable made from plastic suited to quick plug and play deployments. For internal and basic external applications.



DRUM Part No Plastic	DRUM Part No Metal	GENERAL DIMENSIONS - see image						TARE (KG) WEIGHT	CABLE DIAMETERS		
		A	B	C	F	H	T		Ø 5.5	Ø 7.5	Ø 9.2
									CAPACITY	CAPACITY	CAPACITY
GT235	MT235	235mm	135mm	110mm	210mm	300mm	180mm	1KG	60M	30M	20M
GT310	MT310	310mm	170mm	112mm	262mm	370mm	224mm	2KG	125M	70M	40M
GT380	MT380	380mm	236mm	166mm	310mm	485mm	285mm	3KG	240M	115M	80M
GT450	MT450	445mm	295mm	177mm	375mm	554mm	260mm	4KG	310M	175M	110M

Portable and rugged, these reels can be stacked whilst being transported or stored to maximise space. This mid range reel is designed for internal and external use or applications that rugged protection of the fibres.



CABLE STORAGE AND WEIGHTS CHART			
CABLE DIAMETER	MAXIMUM RECOMMENDED LENGTH - MAJOR ZONE 'A'	MAXIMUM RECOMMENDED LENGTH - MAJOR ZONE 'B'	ESTIMATED WEIGHT BASED ON MAXIMUM RECOMMENDED LENGTH, INCLUDING DRUM
Ø 5.5mm	800M	15M	36.32 kg
Ø 7.5mm	400M	15M	30.93 kg
Ø 9.2mm	250M	15M	45.03 kg
DRUM TARE (UNLADEN) WEIGHT - 13.5 kg			



This wooden reel offers a cost effective solution that can be stacked for transportation or storage to maximise space. This reel is designed for both internal and external applications. Supports up to 300 meters of fibre and is available in a variety of sizes.



The Skeleton reels, are light weight yet robust and ideally suited to applications that required the reeling of SMPTE cable. These reels can be stacked for transportation or storage to maximise space. This reel is designed for both internal and external applications and support up-to 200 or 300 metre deployments

SCDFO200 Supports up-to 200 metres of fibre

SCDFO300 Supports up-to 300 metres of fibre

# Bespoke Pre-Terminated Solutions



## Hardened IP Rated Fibre Assemblies

Hardened with over sheath cable protection

IP Rated

Suited to industrial and harsh environments.

## Copex-Housed Patchcords

Patchcords pre installed in 10mm -25 mm diameter round copex

Suitable for a single or duplex patchcord

Suited to applications that require additional cable protection.



Tubing also available in these colours

- Blue
- Black
- Red
- Yellow
- Green
- White



## Bespoke Patchcords

Manufactured in a specialised nylon tubing

Suited to industrial and harsh environments

Can be supplied in a range of colours, sizes and lengths.

## MPO/MTP Fan-Out 2mm Tail Assemblies

Available in 12/24/48 fibre configurations

Facilitates Rapid Deployment

Ideal for in connectivity between patch panel or active equipment patching.





### Flat Duplex Cable Assemblies

Extra Outer jacket on the cable

Higher crush resistance and tensile than ordinary simplex or duplex patchcords

Offers extra protection when installing in ducts or on longer lengths in cable trays.

### Breakout Pre-Term

Ideal for short lengths

Suited to connectivity between cabinets

Higher level of crush resistance.



### MPO/MTP Fan-Out 900µm Tail Assemblies

Available in 12, 24, 48 Fibre configurations

Facilitates Rapid Deployment

Ideal for in panel connectivity.

### MPO/MTP Trunk Assemblies

Available in 12, 24, 48 fibre configurations

Facilitates Rapid Deployment

Ideal for Data Centre and other high fibre count environments.



# Consumables



Isopropyl alcohol is used on lint free wipes to remove grease and dirt from optical fibres during splicing and termination. It is recommended that the fluid is decanted into fluid dispensers before use.

Description	Part Number
Isopropyl Alcohol (IPA) - 1 Litre	IA-IPA1

**i** IPA is highly flammable and should be used only in well ventilated areas.



High temperature epoxy adhesive, is a fast curing version of the industry standard adhesive for "pot and polish" fibre optic connections.

Description	Part Number
High Temperature Epoxy Adhesive - 5 Sachet Pack	EP-153F



Low lint tissues are primarily used to clean bare fibre as part of the termination and splicing process.

Description	Part Number
Lint Free Wipes - Pack of 100	LFW-100



Disposal bins should be used to store fibre ends after cleaving and general cable preparation, with sealable lid.

Description	Part Number
Disposal Bin	CB-645ml



Alcohol dispensing bottle has a pump action feature. By pressing a wipe into the top alcohol will be brought up into the wipe, allowing easy, one touch access.

Description	Part Number
Dispensing Bottle, IPA	DB-IPA



Individual syringe and needle for injecting epoxy in fibre terminations.

Description	Part Number
Syringe and Needle	SN-001

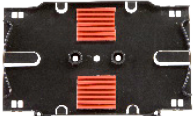


# Consumables



12 Way fibre management cassette is the ideal choice for general use splicing, its unique design is versatile enough for almost every fibre optic application.

Description	Part Number
12 Way Fibre Management Cassette	12F-SCG



This tray provides a low cost solution for protecting and managing splices within a patch panel. The kit includes a splice holder, tray and lid.

Description	Part Number
12 Way Fibre Management Cassette	12F-SCB



The splice bridge provides a protection enclosure for splice protectors to be housed an adhesive pad ensures that the splice bridge is secured.

Description	Part Number
12 Way Splice Bridge c/w Lid	12F-SBL1



A compact 12 way splice bridge, store upto 12 fusion splice protectors.

Description	Part Number
12 Way Splice Bridge - Compact	12F-SBC



Fibre optic panel blanks

Description	Part Number
ST Blank Plug (also used for FC)	ST-Blank
SC Simplex Blank Plug	SCS-Blank
SC Duplex Blank Plug	SCD-Blank



Within a patch panel it is important to maintain good management of the routed fibres. These self adhesive bunny clips allow the installer to manage fibre according to their requirements

Description	Part Number
Bunny Clip with peel-off Adhesive	BC-17-20

# Consumables



Self adhesive fibre optic warning label

Description	Part Number
Fibre Optic Warning Label	FOL-001



A cable gland offering good protection for incoming cables.

Description	Part Number
Cable Gland c/w Lock Nut - 20mm	Gland-M20
Cable Gland c/w Lock Nut - 25mm	Gland-M25
Cable Gland c/w Lock Nut - 32mm	Gland-M32



Inserting a panel into rack is easy when a cage nut is used. The captive nut clips into the rack, then the screw is easily inserted without the need to hold the nut.

Description	Part Number
Cage Nuts - Bag of 50	CN-001



Heat shrinkable splice protectors used to protect fusion splices, they are available in various lengths. Different lengths, colours and mechanical splices available.

Description	Part Number
Splice Protectors - 60mm	SP-060
Splice Protectors - 45mm	SP-045

The One-Click™ connector cleaning tools are designed to clean a wide variety of connector types (e.g. SC, ST, FC, LC, MU, E2000, MPO/MTP, MTRJ, Duplex LC, ODC, LEMO 3K.93C series connectors, etc) either directly, when mounted in an adapter or a receptacle, all with a simple single-action cleaning system (push/release). This handy tool is effective with a variety of contaminants and with over 500 cleaning cycles per unit it also has a remarkably low cost per clean.



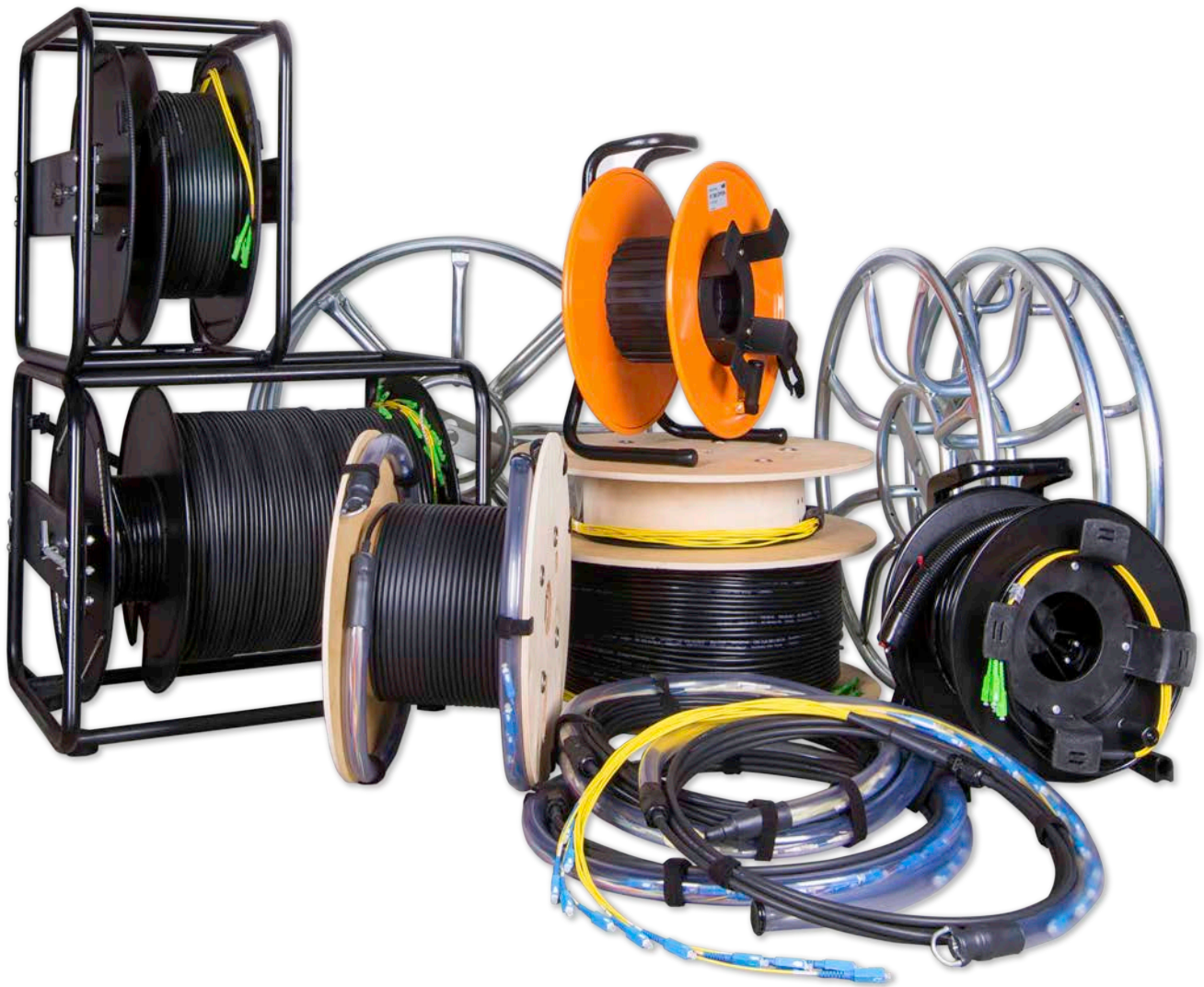
Description	Part Number
One-Click™ Cleaner MU/LC	TL-Click-1.25
One-Click™ Cleaner SC	TL-Click-2.5

# Pre-Configured Fibre Optic Patch Panels



- Robust yet lightweight sliding patch panel suitable for pre-terminated cables or splicing on site.
- Multiple adaptor options including LC (simplex, duplex and quad), SC (simplex and duplex), FC and ST.
- Up to 96 fibres in 1U if using an LC quad adaptor.
- Recessed adaptors to maximise front of panel clearance for patching.
- Individually labelled ports and panel identification fields.
- Multiple splice tray options.
- 10° inspection and 45° open working angles.
- Accepts loose tube, tight buffered and pre-terminated cables with left and right slotted cable glands of two sizes and knock-out section in rear.
- Adjustable mounting arms.

[www.wrenuk.com](http://www.wrenuk.com)



**Head Office**

14 Clarke Road

Bletchley

Milton Keynes

Buckinghamshire

MK1 1LG

UK

T: +44 (0)1908 951000 F: +44 (0)1908 951001